

**CUSTOM**

**ALTER EGO**

- Crème Base
- 1.25 Tangerine
- .75 Coral
- .50 Paprika
- .50 Peach



RTW

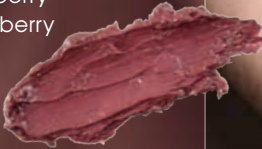
**ONLY IN FLORIDA**  
bold orange



**CUSTOM**

**SULTRY**

- Butter Base
- .25 + .25 + .25 Mahogany
- .25 + .25 Blackberry
- .25 + .25 Wineberry
- .25 Peach
- .125 Ochre
- .125 Brown
- .125 Black
- 1 large scoop Crystal
- 4 tiny Diamond Dust



RTW

**VIVACIOUS**  
true plum



**CUSTOM**

**IMPULSIVE**

- Crème Base
- .75 Magenta
- .75 Wineberry
- .75 Blackberry
- .25 Peach



RTW

**FASHIONISTA**  
deep berry pink



**CUSTOM**

**SHAMELESS**

- Crème Base
- .50 Wineberry
- .50 Blackberry
- .50 Mahogany
- .25 + .25 Black



RTW

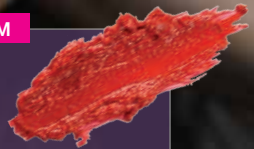
**TEMPTRESS**  
dark berry



**CUSTOM**

**VICE**

- Butter Base
- 1.0 Red Red
- .25 + .25 Crimson
- .125 Ruby Red



RTW

**WELL RED**  
true red



**CUSTOM**

**MYSTIQUE**

- Crème Base
- 1.0 Red Red
- .50 Brown
- .50 + .25 Black
- .25 + .25 Mahogany
- .25 + 25 Ochre
- .25 Cocoa



RTW

**AVANT GARDE**  
neutral blackened red



Colors may vary due to monitor settings and devices.

**W**

AY-OUT POUT...Painted lips in shades of purple, burgundy, deep plum make a statement with the two-toned lip stealing the show. Wearing one shade on the top and another on the lower lip will be in full force this season. Red coupled with either orange or raspberry were the favorites. The ombre effect has returned with lip colors gradually becoming lighter towards the inner lip.

ColorlabPrivateLabel.com • 1.800.790.2417

