

FW•2018 LINE UP

CUSTOM

EMERALD

- 1/2 t Jade
- 1/2 + 1/8 t Onyx
- 1/8 t Saturated Green
- 1/8 t Lapis
- 2 tiny Saturated Yellow



RTW

LUXURY GEL LINER Lush Emerald



CUSTOM

BLACK VIOLET

- 3/4 t Onyx
- 1/2 t Amethyst
- 1/8 t Bronze Frost
- 2 tiny Red Color Adjuster



RTW

CAKE EYELINER Black Violet



CUSTOM

PLUM BROWN

- 1 t Onyx
- 1/2 t Amethyst
- 1/4 t Agate



RTW

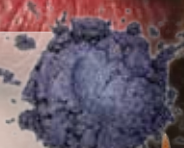
LUXURY GEL LINER Lush Brown



CUSTOM

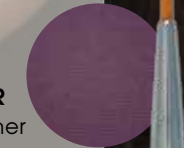
PURPLE HAZE

- 3/4 t Onyx
- 1/4 t Violet Frost
- 1/8 t Silver Frost
- 1/8 t Lapis
- 2 tiny Azurite Frost



RTW

CAKE EYELINER Purple Haze - shimmer



CUSTOM

NAVY

- 3/4 t Onyx
- 1/2 t Lapis
- 1/4 t Blue Color Adjuster



RTW

CAKE EYELINER Navy



LUXURY GEL LINER Lush Navy



NATURAL BEAUTY

CUSTOM

TIMELESS CHEEK & LIP TINT

- 1/2 Crème base
- .125 + .125 Mahogany
- .125 + .125 Blackberry
- .125 Ochre
- 2 drops Peach
- 3 tiny Garnet Frost
- 2 tiny Pink Gold Frost
- 1 tiny Gold Dust Frost
- .5 ml Moisture Additive



NEW

RTW

BARELY NATURAL CHEEK AND LIP TINT

CUSTOM

LUNAR HIGHLIGHTER

- 1/2 Crème base
- 1 large scoop Crystal Frost
- .25 + .25 White
- 3 tiny Morganite Frost
- .5ml Moisture Additive



NEW

RTW

HOLIDAY HIGHLIGHTER



CUSTOM

WELL CONNECTED BRONZER

- 2 1/2 t Medium Mineral Powder
- 3/4 t Dark Mineral Powder
- 1/2 t Antique Gold Frost
- 4 tiny Jade



NEW

RTW

RIO BRONZER



CUSTOM

BRONZED AND BEAUTIFUL

- 30ml Fringe Benefit
- 2 pumps Pearl toner
- 4 tiny Champagne Frost
- 5 tiny Bronze Frost
- 4 tiny Antique Gold Frost
- 3 tiny Sand Frost
- 1 tiny Pink Gold Frost



FIT AND FLUSHED TINTED BB CREAM

A multi-functional, lightweight, oil free gel that provides flawless, natural looking coverage. Formulated with **Optical Pearl Pigments** that provides the skin with a glowing radiant sun-kissed look.



Colors may vary due to monitor settings and devices.

Colors may vary due to monitor settings and devices.

Runways across the globe lined up to spotlight this trend. This season eyeliner takes on many new meanings. Replace your traditional black liner by smudging a **smoky brown** liner under lower lash line and a thin line on top. Colored liner in shades of **green, navy, purples** and **plums** are also framing eyes while the **black heavily rimmed eye** still holds its place on the catwalk.



ColorlabPrivateLabel.com • 1.800.790.2417

ColorlabPrivateLabel.com • 1.800.790.2417